



# YOUR STAFF CAN'T BE EVERYWHERE. BUT INTELLISEE CAN.

## SMARTER SOLUTIONS FOR SCHOOL DISTRICT SAFETY

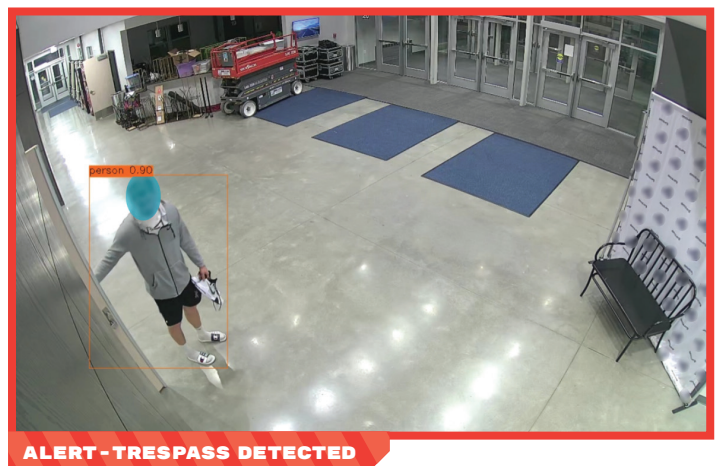
Improving safety is top of mind in every K-12 school district. As we read one tragic headline after another, schools are searching for tools to help keep students and staff safe. The options are endless, but nearly all are reactive. Why wait until something bad happens when there is a proactive solution now?

IntelliSee's threat detection platform turns existing surveillance cameras into proactive security tools using advanced AI that autonomously monitors live security feeds 24/7/365. IntelliSee detects risks from the common such as spills and trespassers, to the potentially catastrophic drawn guns. With real-time alerts, IntelliSee notifies users *before* an incident occurs.

**One of Iowa's fastest-growing K-12 school districts installed IntelliSee and, in less than a year, they've been alerted to 829 risks ranging from spills, falls, trespassing, and more.**

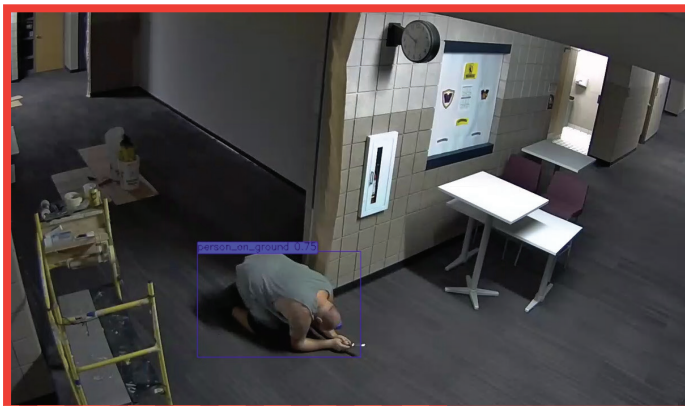
### LIABILITY DOESN'T END WHEN THE SCHOOL BELL RINGS

A well-meaning coach in this district granted a student-athlete unsupervised, after-hours access to the gym and weight room in the middle of the night—a major potential liability. **IntelliSee provides multiple levels of protection for a situation like this.** End users received a trespassing alert allowing administrators to correct the situation immediately. If an injury occurred and the student was unable to get up, a fallen person alert would have ensured help arrived quickly. The district's administrators used this example to re-educate staff on potential liabilities and the importance of complying with standard operating procedures.



## A SAFEGUARD FOR ALL SCENARIOS

Solo workers are the norm after hours and on weekends for many districts. This district had a solo worker suddenly drop to the floor with a potential medical situation. With IntelliSee's real-time alerts, the school was able to quickly confirm the worker was okay. But what if he had a medical emergency, wasn't ok, and couldn't let anyone know? With IntelliSee's 24/7/365 active monitoring, users can rest assured that their faculty, students, and solo workers are safe—even when nobody is around.



### IN JUST 30 DAYS, INTELLISEE DETECTED

**16**  
SLIP  
RISKS

**9**  
FALLEN  
PERSONS

**4**  
TRESPASSERS

FOR THIS SCHOOL DISTRICT.

### COMMON RISKS CAN HAVE COSTLY CONSEQUENCES

IntelliSee's ability to detect drawn guns is one of its most enticing features, but statistically, those incidents are rare. More common and often costly are risks like slipping hazards, falls, trespassers, unauthorized vehicles, loitering, and more. These incidents alone won't make headlines, but they can lead to serious injuries, damages, and lawsuits.

Stop waiting for something bad to happen before you take action. IntelliSee's proactive approach can stop incidents before they happen, or minimize harm when they do. IntelliSee's customizable parameters can be set to your district's specific needs, ensuring you have the protection you need. And we do not store PII or do facial recognition so there are no FERPA or privacy issues.

**Get proactive and secure your school now. Contact a rep today at [sales@intellisee.com](mailto:sales@intellisee.com)**

IntelliSee.com

